



<http://journals.ajshmc.com/>

E-ISSN : APPLIED

A. J. SAVLA HOMOEOPATHIC NATIONAL JOURNAL

TITLE: SCRUTINY OF SINGLE MEDICINE RUBRIC FROM MIND CHAPTER OF KENT REPERTORY

Author details:

Dr. Neha Patel MD.(Hom.)

PG Coordinator, Professor,
HOD Department of Repertory and
Case Taking, Smt A.J. Savla Homoeopathic Medical College &
R.I., Mehsana - 384001, Gujarat.

Email: drnehpatel13@gmail.com



Assist by: Dr. ShubhBharatbhai Chaudhari

PG Scholar
M.D.(Hom. Repertory) Part 1
Email ID- shubhchaudhari27@gmail.com



ABSTRACT:In day to day practice, we found various characteristic mental symptoms as well physical symptoms. It is seen that a homoeopathic cases are frequently treated by focusing on mental symptoms. Because mental symptoms expressed from the most inner level, which helps to find out Homoeopathic Similimum. But due to lack of awareness about mental rubric of Kent's repertory, we faces a difficulties to find out similimum on basis of mental symptoms. In this review article, I have tried to shows hidden information in the mind chapter of kentrepertory. There are total 83 rubrics which having 3 marks single medicine in Mind chapter of



Kent Repertory.

Key words: Mind , Kent's Repertory, Mental rubric, 1st graded medicine.

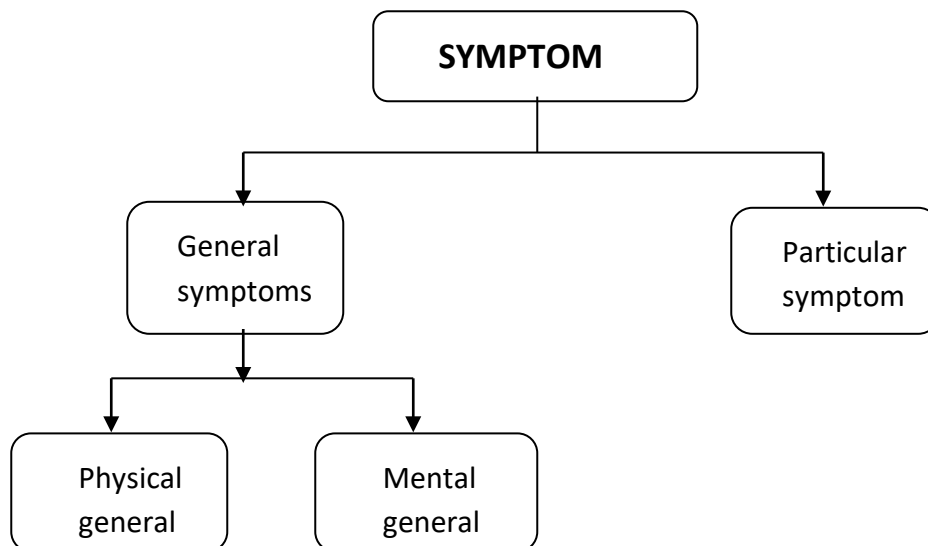
Introduction:

To understand mental rubrics of kent's repertory, we must know about what is symptom.

- The word symptom was derived from the word 'SYMPTOMA' a Greek word which means "Any change that happens."
- SYMPTOM can be defined as an alteration of sensation and function, or any manifestation of a deviation from a former state of health, perceptible by the patient, the individuals around him or the physician.^[1]

"Success in repertorizing depends on the ability to deal with symptoms." – Margaret Tyler.

Kent's classification of symptoms^[1] :-





“When a person arrives at a state where he has an aversion to life, we see it as a general symptom that permeates his economy, that qualifies all the symptoms & is very center of all his state & conditions.” - By Dr. Kent

Mental Generals :-

- Mental includes expression available at an emotional and intellectual level. We should note that emotions provide greater force to individual & any change in the emotional sphere is considered as most important symptom of the person.^[1]
- According to Kent, mind are the most important symptoms in the remedy & in the sick.
- Dr. Kent, in his ‘lectures on homoeopathic philosophy & in materia medica’ has emphasized the importance of knowing the man’s love & hates^[2].
- “The loves & hates or desire & aversions are the deepest mental symptoms.” - Dr. Kent

classification of Mental symptoms :-

Dr. Kent follows Swedenborg’s philosophy. So under influence of Swedenborg, understood the operations of the four fundamental elements of the human mind as^[3] :

- (1) Will
- (2) Understanding
- (3) Memory
- (4) Affection



Dr Kent gives will & affection the highest value and significance, as they primarily motivate human actions and behaviour in life, and constitute 'the very innermost of man'.

PERVERSION OF MEMORY : Absent minded, forgetful, mistakes in writing, Kent had classified a mental symptom as mentioned below:

WILL : Ailments from anger, bad news, grief, love, joy, jealousy etc.

PERVERSION OF UNDERSTANDING :

Delusions, hallucinations, illusions, ideas, thoughts, confusion, Absorbed etc.

speech etc.

Criteria for grading of symptoms^[1]

Criteria	1 st grade	2 nd grade	3 rd grade
Proving	Majority of the provers have given	Brought by few provers	Now and then a prover bring out the symptom
Re-proving	Confirm by re-proving	Confirm by re-proving	Not confirm by re-proving
Verification upon sick	Verified upon sick	Occasionally verified	Verified by curing sick folks

It shows that the 1st grade (3 MARKS) medicines are well proved, confirm by re-proving and verified on sick. So, even though a single medicine given under rubric is directly indicate or



A. J. SAVLA HOMOEOPATHIC NATIONAL JOURNAL

bring a single similimum after referring repertory. It will narrow down the field and save a time to select a similimum. In mind Chapter of Kent Repertory there are total 83 rubric/sub-rubric which having 1st graded (3 MARKS) single medicine as stated below;

Mental rubrics/subrubrics of kent'sreperoty with single medicine in three marks^[4].

1. Anguish, deriving from place to place : **Ars**
2. Anguish, open air amel : **Cann-i**
3. Anxiety , hot air as if in : **Puls**
4. Anxiety, ineffectual desire for stool,from : **Ambr**
5. Anxiety, pressure on the chest : **Sulph**
6. Anxiety, walking, rapidly when, which make him walk faster : **Arg-n**
7. Anxiety, warm bed yet limbs cold if uncovered : **Mag-c**
8. Blood, cannot look at, or a knife : **Alum**
9. Brooding, evening : **Verat**
10. Company, aversion to presence of people intolerable to her during stool : **Ambr**
11. Company, aversion to presence of strangers, during urination : **Nat-m**
12. Concentration, difficult, calculating while : **Nux-v**
13. Confusion, injury to head , after : **Nat-s**
14. Delirium, changing subjects rapidly : **Lach**
15. Delusions, abdomen is fallen in,his stomach devoured,his scrotum swollen : **Sabad**
16. Delusions, erroneous ideas as to the state of his : **Sabad**
17. Delusions, devils, that all persons are : **Plat**
18. Delusions, dog attack him : **Stram**
19. Delusions, dreaming when awake, imagines himself : **Bell**
20. Delusions, enlarged objects are : **Cann-i**



A. J. SAVLA HOMOEOPATHIC NATIONAL JOURNAL

21. Delusions, insane that people think her :**calc**
22. Delusions, objects, bright from :**Stram**
23. Delusions, old rags are as fine as silk :**sulph**
24. Delusions, vengeance, thinks he is singled out for divine :**kali-br**

25. Despair, itching of the skin, from :**Psor.**
26. Despair, religious, suppressed menses, during :**Verat**
27. Despair, social position of :**Verat**
28. Dipsomania, menses, before :**Selen**
29. Dwells, night, midnight after :**Rhus-t**
30. Ecstasy, walking in moonlight :**Ant-c**
31. Fear, approaching him, lest he be touched :**Arn**
32. Fear, death, pain, from : **Coff.**
33. Fear, death, pregnancy, during :**Acon**
34. Fear, imaginary things, animal :**Bell**
35. Foolish behavior, happiness and pride :**Sulph**
36. Frightened, night, wakens at 3 am :**Ars**
37. Gestures, intoxicated, as if :**Hyos**
38. Hatred person of, unmoved by apologies :**Nit-ac**
39. Hurry, everybody must hurry :**Tarent**
40. Hysteria, music amel :**Tarent**
41. Imbeciity, old rags are as fine as silk :**Sulph**
42. Inconsolable, over fancied misfortune :**Verat**
43. Indifference, caresses, to :**Cina**
44. Indifference, onanism, after :**Staph**
45. Indifference, personal appearance :**Sulph**



A. J. SAVLA HOMOEOPATHIC NATIONAL JOURNAL

46. Indifference, welfare of others, to :**Sulph**
47. Irritability, send, nurse out of room :**Cham**
48. Irritability, water, hearing or seeing, on :**Lys**
49. Lamenting , evening : **Verat**
50. Loathing, life, must restrain herself to prevent doing herself injury: **Nat-s**

51. Mania, held, wants to be :**Ars**
52. Mania, suppressed menses :**Puls**
53. Memory, active, evening, midnight, until :**Coff**
54. Moaning, night, 3 a.m. :**Kali-c**
55. Obstinate, against whatever was proposed, he had queerest objection: **Arg- n**
56. Obstinate, children, inclined to grow fat :**Calc**
57. Prostration, menses after : **Alum**
58. Quiet, cannot be quieted :**Cina**
59. Quiet, carried, only by being :**cham**
60. Restlessness, bed in, 6 p.m. till 6 a.m. :**Kreos**
61. Restlessness, sitting, at work, while : **Graph**
62. Sadness, errors of diet :**Nat-c**
63. Sadness, itching, from :**Psor**
64. Sadness, stories, from sad :**Cic**
65. Sensitive, coffee, after :**Cham**
66. Sensitive, cruelties, when hearing of :**Calc**
67. Sentimental, moonlight, in :**Ant-c**
68. Shining, surface of water :**Lyss**
69. Speech, prattling, lies naked in bed :**Hyos**
70. Starting, yawning, at :**Bor**



A. J. SAVLA HOMOEOPATHIC NATIONAL JOURNAL

71. Starting, sneezing at :**Bor**
72. Strange things, voices seem :**Cann-s**
73. Surprises pleasant, affection, after : **Coff**
74. Throws things away, who offend :**Staph**
75. Torments everyone with his complaints :**Zinc**
76. Unconsciousness, morning, rising on :**Bry**

77. Unconsciousness, exanthema slow to appear, when :**Zinc**
78. Unconsciousness, kneeling in church, while : **Sep**
79. Unconsciousness, transient, afternoon, in warm room :**Puls**
80. Unfeeling :**Anac**
81. Weeping, morning, inclined to, at 11 a.m. :**Sulph**
82. Weeping, afternoon, 4 to 8 p.m. : **Lyc**
83. Weeping, thanked, when :**Lyc**

Conclusion : Mental symptoms are very valued to make totality same way Mind chapter of K Kent repertory having too much hidden information which like a drilling to find similimum.

References :

- [1] Tiwari Shashi Kant, Essentials of repertorization, Fifth edition, 2012, B Jain publisher(p) Ltd, New Delhi.
- [2] Kent James Tyler, Lecture on Homoeopathic Philosophy, Low price edition, August 2002, B Jain publisher(p) Ltd, New Delhi.
- [3] Dhawale M.L., Hahnemannian Totality symposium Part- 2, Third edition 2003, second Reprint 2014, Dr. M.L. Dhawale Memorial Trust, Dahisar Mumbai.



<http://journals.ajshmc.com/>

E-ISSN : APPLIED

A. J. SAVLA HOMOEOPATHIC NATIONAL JOURNAL

[4] Kent James Tyler, Repertory Of Homoeopathi Materia Medica, Enriched Indian Edition
reprinted from Sixth American Edition, B Jain publisher(p) Ltd, New Delhi.